

XRF-2020 Series

• Coating Thickness Gauge • Elemental Analysis • ROHS Analyzer



The New Generation of Dual Detector XRF

for plating thickness and composition measurement

Polycapillary X-ray Optic

for very small components nanometer-level coating thickness analysis

- **Precious metal alloy analysis and Element identification.**
- **Trace analysis of hazardous materials.**
- **Coating thickness for multiple layers of Sn-Pb composition.**
- **Ultra Thin Tri-layer Au/Pd/Ni/Cu & Au-Ag/Pd/Ni/Cu**
- **Hazardous Materials Detection, ROHS, WEEE and ELV optimized applications.**
- **Qualitative analysis for up to 30 elements.**
- **Plating bath analysis.**
- **Measures liquids, solids, powders, films and irregular shapes.**
- **Precious metals analysis (gold, silver, platinum and jewelry)**

MicroP Co., Ltd.
www.micropioneer.com

System Specifications

X-Ray Tube :

- High Voltage, 0 ~ 50kV, with W, Mo, Rh, Ag & Cr Target
- Current : 1 ~ 1000 μ A (1mA)

Detector:

- Proportional Counter
- Option : Pin Diode , SDD

Filters:

- Auto Changeover - Primary Filters (Cu, Ni, Ta, Ti, Al)
- Up to 6 Primary X-ray filters (Collimators Type)
- Up to 4 Primary X-ray filters (Polly capillary Type)

Analysis Area

- Collimators/Pin-hole : Up to 5, 0.1, 0.2, 0.3, 0.4, 0.1x0.3mm Others size (option)
- Polly capillary Optics : 25 ~ 50 μ m

Sample Stage :

- Programmable X-Y-Z with Automatic focus, Point & Measure, Focusing Aids and EZ parts loading features

Data :

- 5 custom report formats or direct to Excel

Video :

- Hi-Resolution Sample Viewing Image

Software :

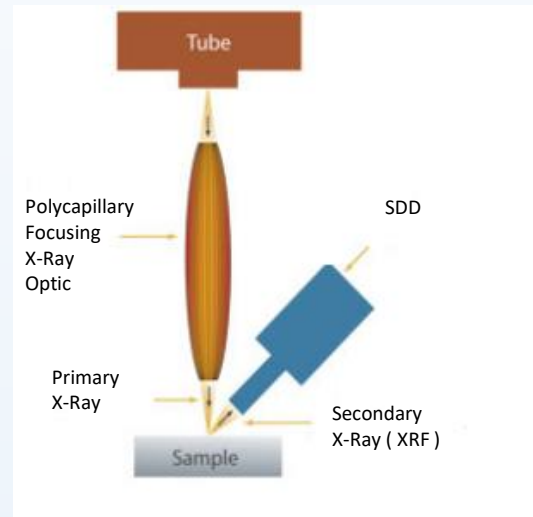
- X-Ray V5 or latest
- Qualitative and Quantitative analysis : Fundamental Parameter (FP), Empirical Method & Spectrum Comparison

Electrical :

- 110/220V AC 50/60 Hz

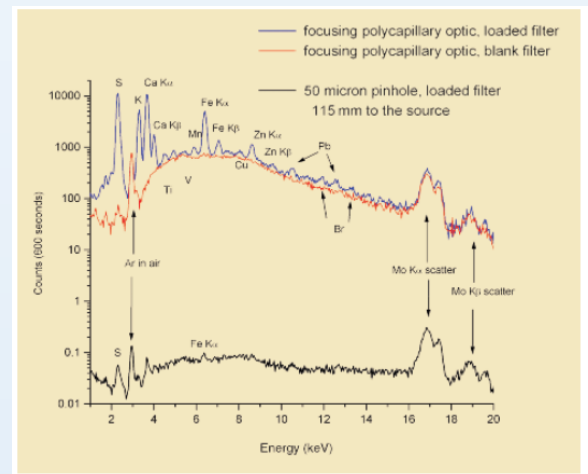
System Capability

- Coating Thickness Measurement for Multiple Layers or Composition
- Ultra-thin Tri-Layer Au/Pd/Ni/Cu & Au-Ag/Pd/Ni/Cu
- Hazardous Material Detection. ROHS, WEEE, Cl and ELV Optimized application
- Elemental Analysis
- Customizable Stage Size and Sample Height.
- Shutterless Technology - Prolong X-ray tube life span



Polycapillary X-Ray Optic

X-ray intensity Gain 100 ~ 1000 times as compare with Collimator Type



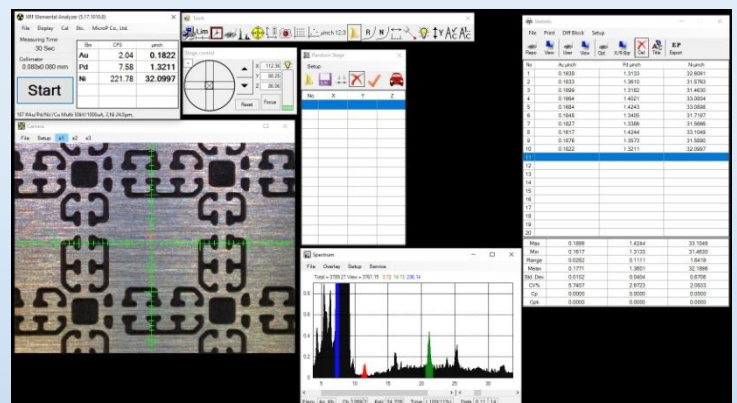
Comparison of polycapillary optic and pinhole . The spectra shown is of an air particulate sample - 50 μ in diameter . Mo excitation (40kV, 20W)



Type : XRF-2020N

Stroke 200(X) x150(Y) x250(Z) mm

Sample weight Max 20kg



Manufacturer :

MicroP Co., Ltd.

RM704, Bukkotro 298, Geumcheon-Gu, 08510, Seoul, Korea. Tel : +82-2-2083 8811

Website : www.micropioneer.com Info@micropioneer.com



XRF-2020H

Stage Stroke 200(X) x170(Y) x120(Z) mm
Max Sample Weight 5Kg



XRF-2020L

Stage Stroke 200(X) x170(Y) x30(Z) mm
Max Sample Weight 2Kg



XRF-2020PCB

Stage Stroke 200(X) x170(Y) x30(Z) mm
Max Sample Weight 2Kg



XRF-2020N

Stage Stroke 200(X) x170(Y) x250(Z) mm
Max Sample Weight 20Kg

Manufacturer : MicroP Co., Ltd.

RM704, Bukkotro 298, Geumcheon-Gu, 08510, Seoul, Korea.

Tel : +82-2-2083 8811

Website : www.micropioneer.com Info@micropioneer.com